

MONTHLY MEMBERSHIP PROGRESS REPORT

District 3232B3

Results as of: 6/30/2024

GMT:

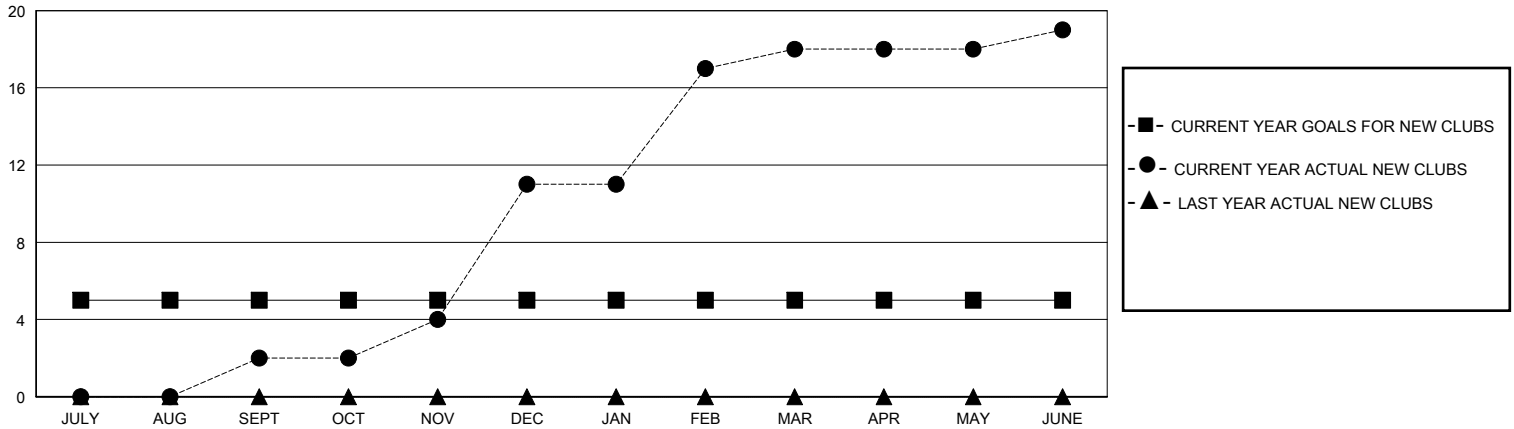
LOCATION INDIA

GMT CA

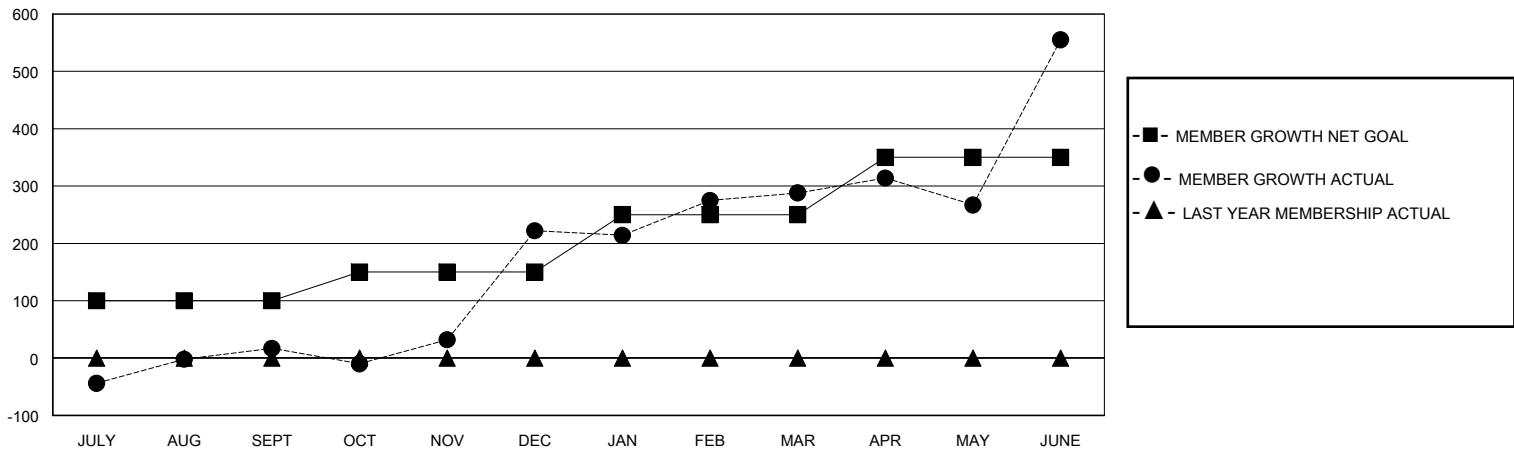
Clubs			
RESULTS FOR 2023-2024			
QUARTER	NEW CLUB GOAL	NEW CLUBS	DROPPED CLUBS
JULY/AUG/SEPT	5	2	3
OCT/NOV/DEC	0	9	10
JAN/FEB/MAR	0	7	1
APR/MAY/JUNE	0	1	0

Members			
RESULTS FOR 2023-2024			
QUARTER	MEMBER GROWTH NET GOAL	MEMBER GROWTH ACTUAL	DROPPED MEMBERS ACTUAL (including transfers)
JULY/AUG/SEPT	100	143	117
OCT/NOV/DEC	50	528	312
JAN/FEB/MAR	100	150	84
APR/MAY/JUNE	100	547	208

GOALS AND ACTUAL NEW CLUBS CUMULATIVE



GOALS AND ACTUAL MEMBERS CUMULATIVE



DROPPED CLUBS: 14	49 CLUBS OF 66 ADDED 1 OR MORE NEW MEMBERS	<u>GENDER DISTRIBUTION</u>	
<u>DROPPED MEMBERS</u>		MALE	1,551 (60.07%)
DECEASED	4	FEMALE	1,031 (39.93%)
CLUB CANCELLED	270	TOTAL FAMILY UNIT MEMBERS 1,507	
OTHER	446		
TOTAL	720	FAMILY MEMBERS PAYING HALF DUES 1,089	
CLICK HERE FOR CUMULATIVE MEMBERSHIP DATA		TOTAL FAMILY UNIT MEMBERS 1,507	
		FAMILY MEMBERS PAYING HALF DUES 1,089	